



Thule Rapid System Kit 1084

> Instructions

FORD Ka, 3-dr Hatchback, 97-08

The diagram is divided into four main sections:

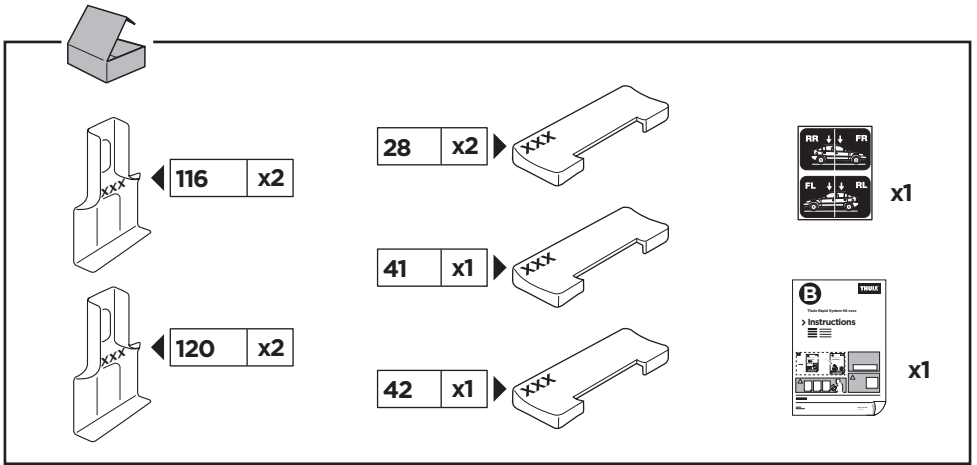
- Top Left:** A dashed box containing an information icon (i), a warning triangle, an illustration of a person reading instructions, and two instruction manuals. Manual 'B' is titled 'Thule Rapid System Kit 1084' and manual 'A' is titled 'Thule Rapid System 754'. An arrow points from manual 'B' to manual 'A'.
- Top Right:** A weight calculation diagram. It shows a bag labeled 'xx kg / xx lbs' plus a rack labeled '7 kg / 15,4 lbs' and two screws labeled '3 kg / 6,6 lbs'. Below this, an equals sign leads to a box containing 'Max. 65 kg' and 'Max. 143 lbs'.
- Bottom Left:** A dashed box containing a warning triangle, three instruction manuals (A, B, and Security), and an illustration of a person reading a manual.
- Bottom Right:** A diagram of a car with arrows indicating the rack's position. A speedometer graphic shows a warning triangle between 40 km/h (25 Mph) and 130 km/h (80 Mph), with a note that the maximum speed is 80 km/h (50 Mph).

ISO 11154-E

141084

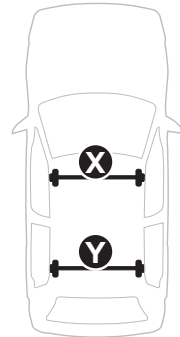
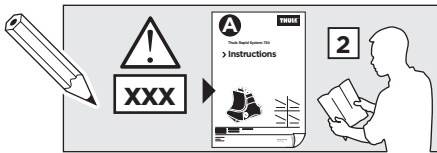
C.20140217
519-1084-01

Bring your life
thule.com



1

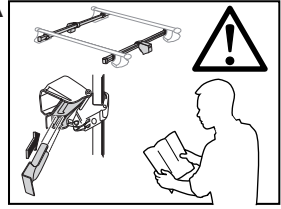
	X (scale)	X (mm)	X (inch)
FORD Ka, 3-dr Hatchback, 97-08	19	841	33 1/8



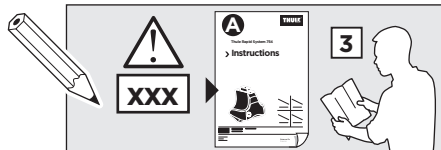
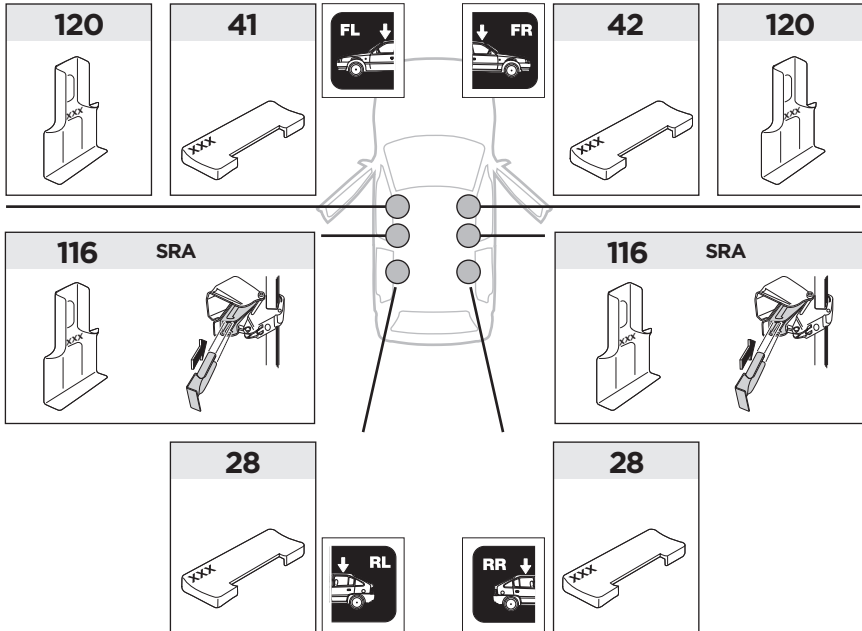
	Y (scale)	Y (mm)	Y (inch)
FORD Ka, 3-dr Hatchback, 97-08	16	811	31 7/8

2

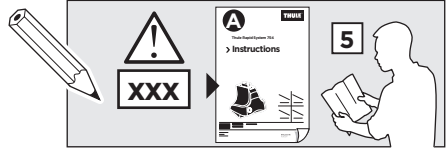
SRA



FORD Ka, 3-dr Hatchback, 97-08



3



	W (mm)	Z (mm)	Y (mm)	W (inch)	Z (inch)	Y (inch)
FORD Ka, 3-dr Hatchback, 97-08	210	700	310	8 1/4	27 1/2	12 1/4

